



Strategic Plan Initiative

SUPPORTIVE CULTURE — A.1.a: Develop shared practices utilizing SEL, restorative practice and culturally responsive tenets.



SUMMARY — By expanding the opportunity for each student and staff member to experience positive relationships that support students' holistic needs, this initiative links to the Supportive Culture theme of the strategic plan, which supports the six priority outcomes.

COMPLETED:

- ✓ All staff provided professional development in RULER Training
- ✓ Second Step lessons identified and delivered to elementary students



RESOURCES:

- SEL information link
- Strategic plan link

“Students not only need to feel they 'fit in,' they need to feel they 'belong.' Fitting in is according to someones else's standards. Belonging includes being valued for your contributions and celebrated for your unique gifts and strengths.”-Director Dave Peters

STUDENT IMPACT:

- Students are learning skills to help improve their emotion regulation. This positively impacts their confidence and ability to engage, make decisions, take resets and interact with others.
- Students have a tool for repairing relationships and a way to reengage with their classroom and school community.
- "The focus on increasing student sense of belonging helps me believe in myself, try harder and not give up." - EPS student

TEACHER IMPACT:

- "Being an emotion scientist rather than an emotion judge helps me to be empathetic and more accurate in my supports to students."
- "Learning about the emotion skills of RULER has greatly enriched my personal and professional life... I am grateful our students have this opportunity."
- "When teacher-student relationships are healthy, student learning comes much more easily."

QUESTIONS? PLEASE CONTACT:

Dave Peters, 425-385-4063, DPeters@everettsd.org



Strategic Plan Initiative

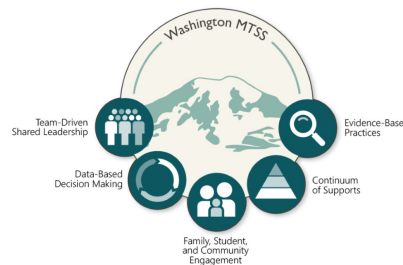
SUPPORTIVE CULTURE — A.2.b: Enhance Positive Behavioral Interventions and Supports at every school, integrating social-emotional learning support.



SUMMARY — By creating research-based, culturally engaging opportunities where each student feels safe to engage and socially identify, this initiative links to the Supportive Culture theme of the strategic plan, which supports the six priority outcomes.

COMPLETED:

- ✓ Establish cross-department training and collaboration
- ✓ Establish District Advisory Team
- ✓ Collect base-line stakeholder data



RESOURCES:

- MTSS overview link
- Panorama survey information
- Strategic Plan link

“Multi-Tiered System of Supports (MTSS) helps to ensure students benefit from nurturing environments and equitable access to instruction and supports that are differentiated to meet their unique needs.” -OSPI

STUDENT IMPACT:

- Supports the whole child: academic, social-emotional, behavioral and attendance.
- Increases equitable and differentiated access to learning and intervention.
- Provides regular progress monitoring to ensure student growth.

STAFF IMPACT:

- School-wide expectations are systematically taught and retaught
- Data is used to make decisions about individual students and school-wide needs
- The district's Five Core Principals of PBIS and the Benchmark of Implementation provides schools with a clear pathway toward success

QUESTIONS? PLEASE CONTACT:

Mimi Brown, 425-385-4061, MBrown@everettsd.org

